



# ChemLogic® CL4 / CL8 Continuous Gas Detection System

DOD Technologies

The ChemLogic® CL4/CL8 Continuous Gas Detection System is our flagship monitor for multipoint, low-maintenance colorimetric gas detection.

The CL4/CL8 provides interference-free toxic gas monitoring and detection at extremely low-levels. It is simple to install, and easy to maintain.

The system utilizes 1/4" tubing to easily upgrade from legacy sample draw systems. Simply plug in your existing 1/4" tubing and you're ready to go. Each detector comes equipped with relay & analog outputs and can also be digitally integrated.



**CONTINUOUS**



**MONITORING**

**FASTEST**



**RESPONSE TIMES**

**LOW**



**MAINTENANCE**

**ENERGY**



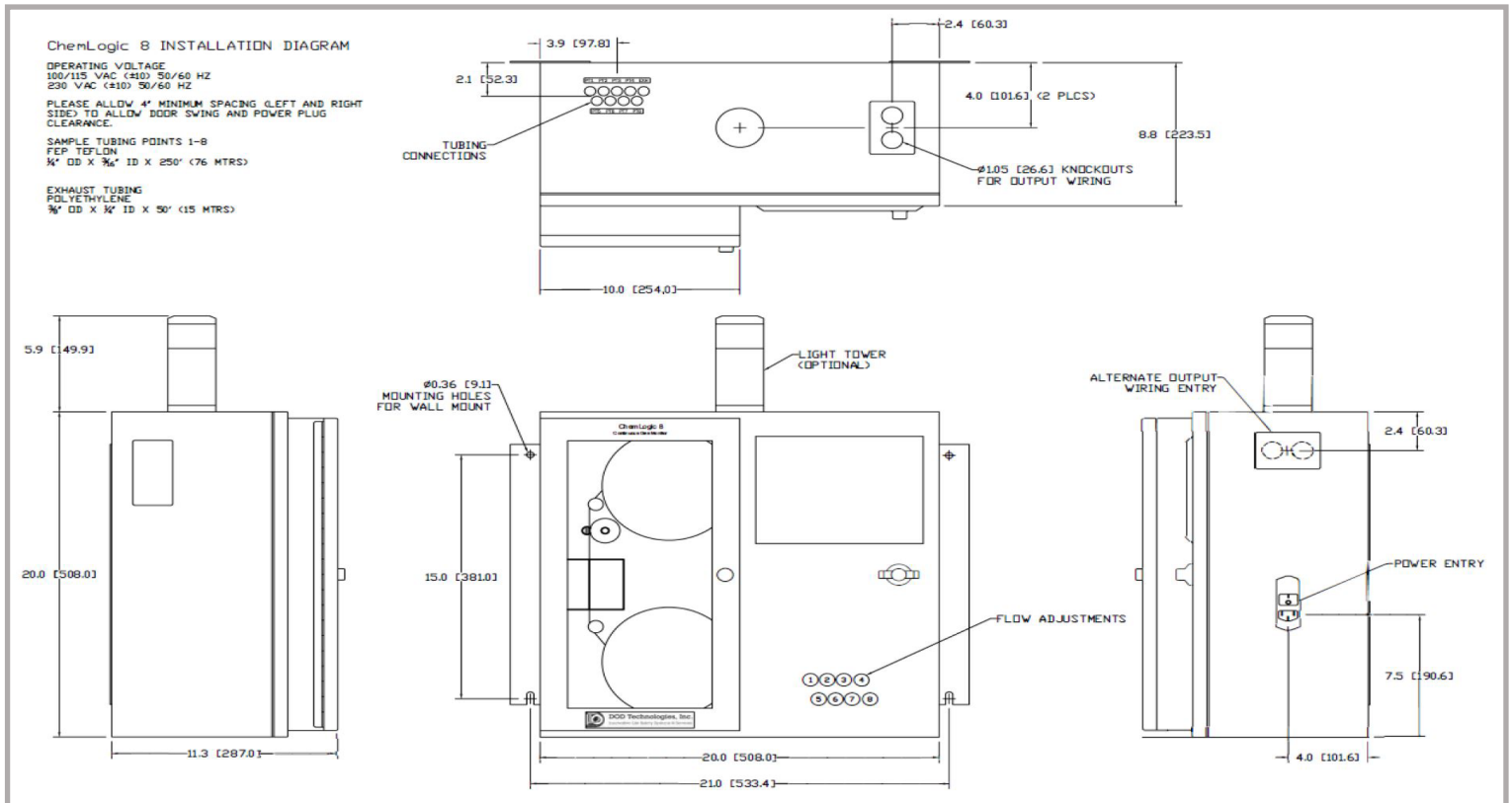
**EFFICIENT**



## Features & Benefits

FEATURES	BENEFITS
Intelligent Optics	Reduced maintenance with more accurate readings
Optimized Flow System	Faster response time
Long-Life Cassettes	Colorimetric tape cassettes that can last up to 4 months, reducing operating cost
SSD Memory Card	Easily retrievable data
Trend Display	Obtain information quickly in real-time
Complete Front Access	Easy to service
Touch Control	Easy to start-up and operate
Remote Mountable I/O	Reduced cost of installation
Four or Eight Points	Flexible / expandable systems

## Installation Dimensions (in inches)





## Specifications

<b>Model / Detection Principle</b>	CL4 and CL8 / Colorimetric
<b>Monitoring Points</b>	4 (CL4), 4 or 8 (CL8)
<b>Gas Families</b>	Ammines, Hydrides, Mineral Acids, Oxidizers
<b>Sample Distance</b>	300 ft. (91m) - 1/4" OD x 3/16" ID Teflon FEP tubing
<b>Exhaust Tubing</b>	25 ft. (7.62m) - 3/8" OD x 1/4" Poly-E tubing
<b>Display</b>	8" Color Touchscreen
<b>Local Alarm Indication</b>	Visual on display and audible (with light tower)
<b>Relay Outputs</b>	Programmable low and high-level faults
<b>Operating Temperature</b>	40°F to 104°F / 4°C to 40°C
<b>Operating Voltage</b>	100 - 110VAC (50/60Hz), 230VAC (50Hz)
<b>Power Consumption</b>	Less than 1 Amp
<b>Enclosure</b>	Powder coated steel
<b>Dimensions</b>	20"H x 20"W x 11.3"D (508mm x 508mm x 287mm)
<b>Weight</b>	65 lb. (29.48 kg)

## Detectable Gases

### Ammines

Ammonia (NH3) 0-150 ppm

### Hydrides

Arsine (AsH3) 0-50ppb  
 Arsine (AsH3) 0-500 ppb  
 Diborane (B2H6) 0-1,000 ppb  
 Germane (GeH4) 0-2,000 ppb  
 Hydrogen Selenide (H2Se) 0-25 ppm  
 Hydrogen Selenide (H2Se) 0-500 ppm  
 Phosphine (PH3) 0-300 ppb  
 Phosphine (PH3) 0-3,000 ppb  
 Silane (SiH4) 0-50 ppm  
 Stibene (SbH3) 0-300 ppb  
 TBA 0-500 ppb

### Oxidizers

Chlorine (Cl2) 0-2,000 ppb  
 Chlorine (Cl2) 0-3,200 ppb  
 Chlorine (Cl2) 0-5,000 ppb  
 Fluorine (F2) 0-10,000 ppb  
 Nitrogen Dioxide (NO2) 0-30 ppm  
 Nitrogen Dioxide (NO2) 0-100 ppm

### Mineral Acids

Boron Trifluoride (BF3) 0-150 ppm  
 Hexafluorocyclobutene (C4F6) 0-40 ppm\*  
 Hydrogen Bromide (HBr) 0-20 ppm  
 Hydrogen Chloride (HCl) 0-20 ppm  
 Hydrogen Fluoride (HF) 0-20 ppm  
 Nitric Acid (HNO3) 0-6 ppm  
 Nitrogen Trifluoride (NF3) 0-20 ppm\*  
 Octafluorocyclopentene (C5F8) 0-15 ppm\*  
 Sulfuric Acid (H2SO4) 0-750 ppb

### Other

Acetic Acid (CH3COOH) 0-50 ppb  
 Bromine (Br) 0-1,000 ppb  
 Carbonyl Sulfide (COS) 0-20 ppm  
 Hydrazine (N2H4) 0-500 ppb  
 Hydrogen Cyanide (HCN) 0-2,500 ppb  
 Methylene Isocyanate (MIC) 0-10 ppm  
 Phosgene (COCl2) 0-1,000 ppb  
 Phosgene (COCl2) 0-1,000 ppb  
 Phosgene (COCl2) 0-1,000 ppb  
 TDMAT 0-5,000 ppb

\* Pyrolyzer Required - Detected as Hydrogen Fluoride after pyrolyzation



## REALIBILITY & SUPPORT

DOD Technologies is the global leader in low level gas detection systems and solutions. We understand the importance of keeping your business operational and know that that false alarms can cost millions of dollars in lost productivity.

We offer a comprehensive line of ChemLogic® gas detection products, engineered to an enhanced standard of accuracy and reliability. Our worldwide network of knowledgeable service engineers are also ready to assist you with a passion for gas detection. The DOD Technologies portfolio includes fixed systems, portable gas detectors, controllers, systems integrations and on-site field services.

For more information, or to order, please visit us at [DODtec.com](http://DODtec.com).



DOD Technologies, Inc.  
675 Industrial Drive  
Cary, IL 60013



(815) 788-5200



[solutions@dodtec.com](mailto:solutions@dodtec.com)



[DODtec.com](http://DODtec.com)