



**DOD Technologies**

# **Product Guide**



*Low-Level Gas Detection  
Systems & Solutions*



# Contents

## HIGH TECH TOXIC GAS DETECTION SOLUTIONS

ChemLogic® Colorimetric Gas Detection Systems	3
FTIR Gas Detection	7
Single Point Gas Detection	8
Portable Gas Detection	11

## DIISOCYANATES & CORROSIVE GAS DETECTION SOLUTIONS

Fixed Gas Detection	14
Portable Gas Detection	15
Wearable Diisocyanates Detection	16

## INDUSTRIAL GAS DETECTION SOLUTIONS

Combustible Gas & Flame Detection	18
Portable Handheld Gas Detectors	19
Connected Worker Monitors	22

## COMMERCIAL GAS DETECTION SOLUTIONS

Control Systems	24
Fixed Gas Detection	25
Indoor Air Quality Monitoring	26
Steel Dust Monitors	27

## MEASURABLE GAS LISTS

ChemLogic Colorimetric Gases	28
New Cosmos PS-7 Gases	31



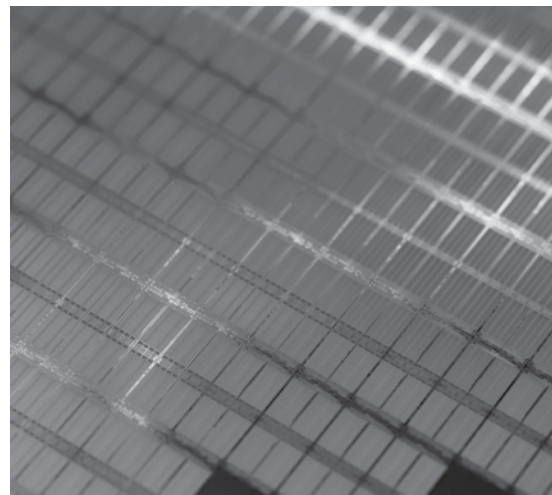
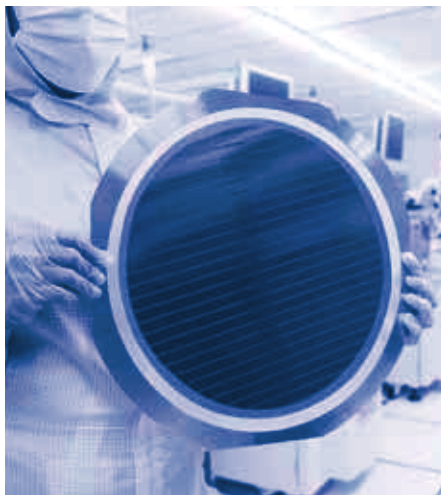
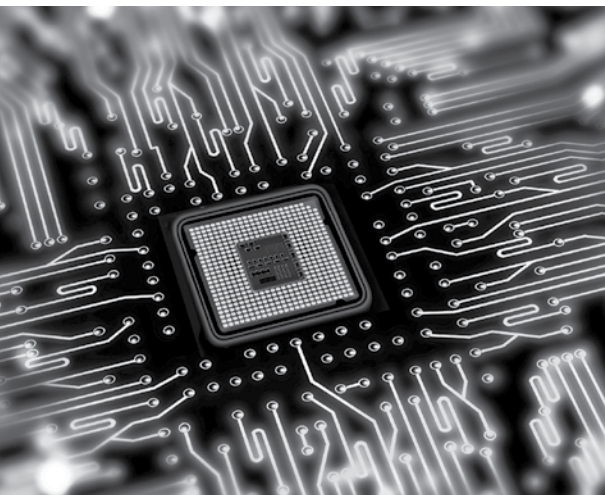




## High Tech Toxic Gas Detection Solutions

DOD Technologies offers a complete portfolio of technically-advanced gas detection solutions including ChemLogic® colorimetric tape, infrared spectroscopy, and electrochemical technology

Common uses: semiconductor manufacturing, foam manufacturing, aerospace propulsion and safety, specialty chemicals industry, research laboratories, emergency response



# Vision 8® Continuous Gas Detector With EΛE SENSE® Technology

## Series # V8

The Vision 8® from DOD Technologies is the world's first, and only, color sensing and differentiating colorimetric gas detection system.

Capable of distinguishing between different gases within the same family quickly and accurately – Vision 8 enables more precise measurement and response.

The Vision 8 combines 8 points of gas detection and controller capability into a single fixed unit with remote viewing and administrator access.



EΛE SENSE TECHNOLOGY®

### FEATURES:

Detection Principle	Maximum Points	Maximum Distance	Communication Protocols	Power Requirements	Product Dimensions
Colorimetric	8	600 ft.	Device Net, OPC, Profibus, Modbus, ControlNet	100-240 VAC 50/60 HZ	Height: 20" (508 mm) Width: 14" (355 mm) Depth: 13.57" (345 mm) Weight: 65 lbs.(29.48 kg)

### BENEFITS:

CONTINUOUS

MONITORING

LOW

MAINTENANCE

ENERGY

EFFICIENT

FASTEST

RESPONSE TIMES



Visit [DODtec.com](http://DODtec.com) for additional details or to shop genuine ChemLogic® Colorimetric Cassettes.

## EΛE SENSE TECHNOLOGY

The Vision 8 is the first of its kind to feature the highly innovative and patented EΛE Sense Technology. Pronounced "EYE Sense", this technology is an integral part of a highly sophisticated optical system. Advanced fiber optics employ Effective Wavelength Evaluation (EΛE), allowing the Vision 8 to thoroughly analyze ChemLogic® colorimetric tape stains and differentiate between gases within a family. The bottom line, EΛE Sense Technology provides the fastest, most accurate and comprehensive results possible.

\*\* See the Measurable Gas List section for a reference of system-specific measurable gases.



# ChemLogic® 96-Point Gas Detector

## Series # CL96

The ChemLogic 96-Point Continuous Detector provides the quickest response times of any multipoint TGMS. It is the standard of interference free, low-maintenance colorimetric gas detection.

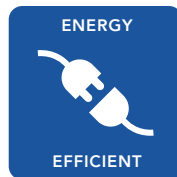
This system is simple to install and utilizes ¼" tubing to easily upgrade over other obsolete sample draw systems. Simply plug in your existing ¼" sample tubing and you're ready to go. The CL96 is perfect for large scale gas detection applications like semiconductor manufacturing, pharmaceutical labs, and cleanrooms. The system can be configured from 16 up to 96 points of detection.



### FEATURES:

Detection Principle	Maximum Points	Maximum Distance	Communication Protocols	Power Requirements	Product Dimensions
Colorimetric	96	400 ft.	Device Net, OPC, Profibus, Modbus, ControlNet	100-240 VAC 50/60 HZ	Height: 60.3" (153cm) Width: 31" (79 cm) Depth: 28.5" (72 cm) Weight: 200-400 lbs.

### BENEFITS:



Visit [DODtec.com](http://DODtec.com) for additional details or to shop genuine ChemLogic® Colorimetric Cassettes.

### DETECTABLE GASES:



The CL96 offers over 70 designed gas curves suitable for a wide variety of manufacturing settings including semiconductor, chemical, pharmaceutical, waste water, as well as sites using toxic industrial chemicals (TICs).

\*\* See the Measurable Gas List section for a reference of system-specific measurable gases.

# ChemLogic® Four or Eight Point Gas Detector

## Series # CL4 / CL8

The ChemLogic Continuous 4 or 8 Point Gas Detector is our flagship monitor for multipoint, low-maintenance colorimetric gas detection. Easy to install and maintain, it ensures accurate and interference-free low-level gas detection.

This system utilizes ¼" tubing to easily upgrade over other obsolete sample draw systems. Simply plug in your existing ¼" tubing and you're ready to go. Each gas monitor can plug right into the wall. It comes equipped with relay & analog outputs and can also be integrated digitally. The system can be configured with 4 or 8 points.



### FEATURES:

Detection Principle	Maximum Points	Maximum Distance	Communication Protocols	Power Requirements	Product Dimensions
Colorimetric	8	300 ft.	Device Net, OPC, Profibus, Modbus, ControlNet	100-240VAC 50/60 HZ	Height: 20" (51 cm) Width: 20" (51 cm) Depth: 11.3" (29cm) Weight: 70 lbs.

### BENEFITS:



Visit [DODtec.com](http://DODtec.com) for additional details or to shop genuine ChemLogic® Colorimetric Cassettes.

### DETECTABLE GASES:



The CL4 / CL8 offers over 70 designed gas curves suitable for a wide variety of manufacturing settings including semiconductor, high-tech chemical, pharmaceutical, waste water, as well as sites using toxic industrial chemicals (TICs).

*\*\* See the Measurable Gas List section for a reference of system-specific measurable gases.*



# ChemLogic® Portable Gas Detector

Series # CLPx

CLPx is a convenient, handheld gas detector suitable for a variety of applications. A robust optical system and automated calibration make the CLPx the most reliable and intuitive gas detector on the market.

It is a truly versatile instrument that can be configured to detect a variety of gases, eliminating the need to purchase different instruments or gas keys to sample different gases. Changing the instrument from detecting one gas to another requires a simple change of the cassette.



**FEATURES:**

Detection Principle	Maximum Points	Maximum Distance	Data Logging	Power Requirements	Product Dimensions
Colorimetric	1	Point of Use	Data can be downloaded from device after event	NiMH Battery (included)	Height: 8.6" (22 cm) Width: 4.1" (10 cm) Depth: 11.3" (29 cm) Weight: 6 lbs.

**BENEFITS:**



Visit [DODtec.com](http://DODtec.com) for additional details or to shop genuine ChemLogic® Colorimetric Cassettes.

**DETECTABLE GASES:**



Measures at **Low PPB Levels**

The CLPx offers over 20 designed gas curves suitable for a wide variety of manufacturing settings. It is light weight and ready-to-use in any quick response or emergency situation.

*\*\* See the Measurable Gas List section for a reference of system-specific measurable gases.*

# 64-Point FTIR Gas Detector

Series # DOD64

The DOD64 FTIR Gas Detector offers a unique environmental monitoring solution. This system can detect and specify virtually any gas, chemical, or odor in an industrial process. It accomplishes this through analyzation of the infrared spectra of a gas.

This system is integrated with all new state of the art controls and HMI systems. The sequential monitor can be customized to monitor between 16 and 64 points. The unique design simplifies the operations through an innovative, user-driven engineering approach.



### FEATURES:

Detection Principle	Maximum Points	Maximum Distance	Communication Protocols	Power Requirements	Product Dimensions
FTIR	64	400 ft.	Device Net, OPC, Profibus, Modbus, ControlNet	100-240 VAC 50/60 HZ	Height: 60.3" (153cm) Width: 31" (79 cm) Depth: 28.5" (72 cm) Weight: 200-400 lbs.

### BENEFITS:



### DETECTABLE GASES:



The DOD64 detector scans an area and records the infrared spectra. These spectra provide a "fingerprint" of the air samples. With this print, virtually any gas can be detected and specified. Organics, PFC, CFC, HFC, NF3, and a wide variety of other inorganic gases can be monitored.





# Single Point Gas Detector

Series # PS-7

The versatile PS-7 Single Point Toxic Gas Detector monitors a wide range of toxic and combustible gasses as well as oxygen depletion. This reliable system utilizes four detection principles (Electrochemical, Hot-Wire, Galvanic, Catalytic Bead) and gas-specific sensors.

The device can extract a sample from up to 75 feet away with its robust pump that lasts for up to seven years. The high quality sensors are able to distinguish between combustibles. It is also capable of monitoring NF3 with the use of a compact and reliable low temperature pyrolyzer.



**FEATURES:**

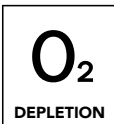
Detection Principle	Maximum Points	Maximum Distance	Communication Protocols	Power Requirements	Product Dimensions
Electrochemical, Hot-Wire, Galvanic, Catalytic Bead	1	75 ft.	Device Net or Modbus	24VDC	Height: 4.9" (13 cm) Width: 2.4" (6 cm) Depth: 5.6" (14 cm) Weight: 2 lbs.

**BENEFITS:**



Visit [DODtec.com](http://DODtec.com) for additional details or to shop PS-7 Series Sensors.

**DETECTABLE GASES:**



Measures at  Low PPB Levels

The PS-7 offers over 125 designed gas calibrations with measurements in PPB, PPM, % LEL and O2 volume. It is suitable for a wide variety of manufacturing settings including semiconductor, high-tech chemical, pharmaceutical, waste water, as well as sites using toxic industrial chemicals (TICs).

*\*\* See the Measurable Gas List section for a reference of system-specific measurable gases.*

# Single Point Gas Detector

Series # GTD-5000

The GTD-5000 Gas Detector uses reliable sensor technology to detect many key toxic, ambient and flammable gases in a plant. The GTD-5000 monitors points up to 100 feet away while using state of the art technology to regulate flow rates and ensure error-free gas detection.

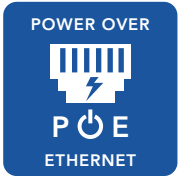
Each device has its own IP address to log events and alarms. The data history can be viewed remotely with authorized access. The GTD-5000 can be integrated with analog or digital communication, as well as Power over Ethernet (PoE).



## FEATURES:

Detection Principle	Maximum Points	Maximum Distance	Communication Protocols	Power Requirements	Product Dimensions
Electrochemical and PID	1	100 ft.	Ethernet IP or Modbus	24VDC	Height: 6.9" (18 cm) Width: 2.8" (7 cm) Depth: 6.3" (16 cm) Weight: 2 lbs.

## BENEFITS:



## DETECTABLE GASES:



**Measures at ↓  
Low PPB Levels**

The GTD-5000 offers over 40 designed gas calibrations with measurements in PPB, PPM, % LEL and % volume. It is suitable for a wide variety of manufacturing settings including semiconductor, high-tech chemical, pharmaceutical, waste water, as well as sites using toxic industrial chemicals (TICs).



# Multipoint Gas Detector Cabinet

Series # EC20

The Multipoint Cabinet offers the convenience of gas monitoring with the sample distance of a larger TGMS. This customizable system can accommodate from one to 20 single point detectors to suit a variety of application needs.

Cabinet samples can be extracted from up to 450 feet away utilizing its powerful sample draw pump. The redundant pump comes standard to ensure performance and reliability. The optional Internet switch provides full system visualization with only one line back to the cabinet.



**FEATURES:**

Detection Principle	Maximum Points	Maximum Distance	Communication Protocols	Power Requirements	Product Dimensions
Electrochemical, Hot-Wire, Galvanic	20	450 ft.	Ethernet IP or Modbus	100-240 VAC 50/60 HZ	Height: 54" (137 cm) Width: 26" (66 cm) Depth: 10.4" (26 cm) Weight: 80 lbs.

**BENEFITS:**



**DETECTABLE GASES:**



Measures at  
Low PPB Levels

The EC20 is ideal for electrochemical gas detection and capable of monitoring most gases (except corrosives, amines and oxidizers). The PS-7 and its compatible toxic gas and oxygen depletion sensors are available for use in this multi-point cabinet, which holds up to 20 individual detectors. An internal booster pump extends the maximum sample draw length from 75 feet to over 400 feet.

# Portable Electrochemical Gas Detector

## Series # XPS-7II

The XPS-7II Portable Electrochemical Gas Detector offers reliable, calibrated gas detection to meet a wide range of applications. Detect various toxic gases using simple ‘plug-and-play’ sensors that allow you to quickly adjust to identify your target gas.

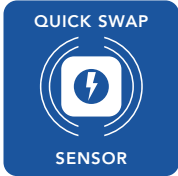
Small and lightweight, the XPS-7II features a large LCD display. It utilizes dry alkaline batteries or can be connected to an optional AC power supply. The innovative alarm changes speed as a change in gas concentration is detected.



### FEATURES:

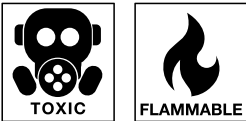
Detection Principle	Maximum Points	Maximum Distance	Data Logging	Power Requirements	Product Dimensions
Electrochemical	1	Point of Use	Optional Windows 10 software available	4 x AA Batteries	Height: 4.9" (13 cm) Width: 2.4" (6 cm) Depth: 5.6" (14 cm) Weight: 2 lbs.

### BENEFITS:



Visit [DODtec.com](http://DODtec.com) for additional details or to shop XPS-7 Series Sensors and Sensor Stockers.

### DETECTABLE GASES:



Measures at  Low PPB Levels

The XPS-7 is an excellent option for detecting the most common gases in semiconductor plants. Simply insert a compatible sensor without the need for additional equipment. Sensors are field-replaceable to further reduce maintenance. Choose the optional Sensor Stocker station to store up to nine sensor units for added convenience.

# PPB Toxic Gas Handheld Detector

Series # XP-703DIII

The XP-703DIII Handheld Detector is considered the standard in the industry for locating leaking gas cylinders right off the delivery truck. It detects most main dopant gases used in the semiconductor industry in as little as ten seconds.

The extractive pump draws samples to find even trace amounts of toxic gas. The device provides auto-zeroing and a long battery life, up to 12 hours on two AA batteries.



**FEATURES:**

Detection Principle	Maximum Points	Maximum Distance	Data Logging	Power Requirements	Product Dimensions
Electrochemical	1	Point of Use	N/A	2 x AA Batteries	Height: 5.1" (13 cm) Width: 1.5" (4 cm) Depth: 1.3" (3 cm) Weight: ½ lb.

**BENEFITS:**

EMERGENCY  
RESPONSE

LONG 12-HOUR  
BATTERY LIFE

SEMICONDUCTOR  
GAS MONITORING

DETECTS  
TRACE AMOUNTS

**DETECTABLE GASES:**

TOXIC

FLAMMABLE

Measures at  
Low PPB Levels

Name	Gas	LDL
Arsine	AsH3	200 ppb
Diborane	B2H6	100 ppb
Hydrogen	H2	1 ppm
Phosphine	PH3	300 ppb
Silane	SiH4	500 ppb

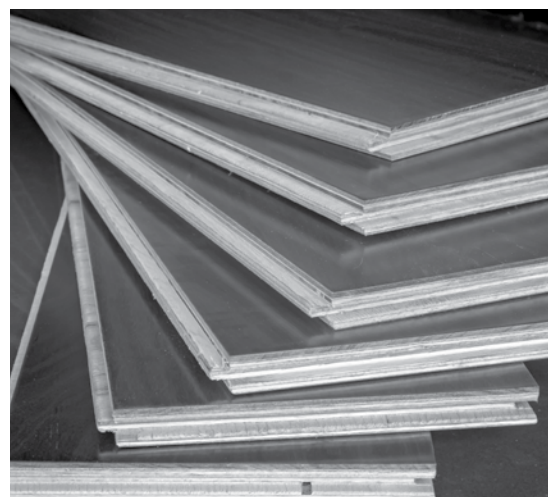
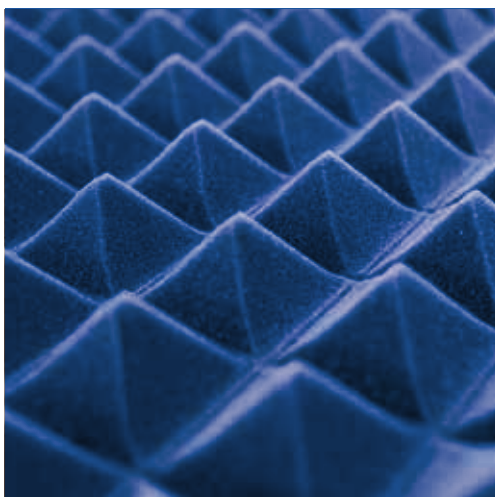




## DIISOCYANATES & CORROSIVE GAS DETECTION SOLUTIONS

These sophisticated products detect diisocyanates and corrosives at low levels, utilizing a range of advanced technologies

Common Uses: polyurethane foaming, engineered wood, automotive, specialty chemicals industry & research laboratories





# ChemLogic® Single or Dual Point Gas Detector

Series # CL1 / CL2

The ChemLogic® Single or Dual Point Detector provides continuous monitoring and quick response to low level toxic and corrosive gases. These reliable detectors offer low-maintenance, interference-free colorimetric gas detection. The system utilizes ¼" tubing that allows samples to be drawn up to 150-feet for most gases.

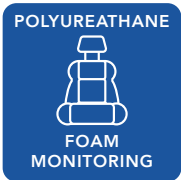
ChemLogic fixed detectors are easy to install. Simply plug them into the wall and they're ready to go! They come equipped with relay & analog outputs, and can also be integrated digitally.



### FEATURES:

Detection Principle	Maximum Points	Maximum Distance	Communication Protocols	Power Requirements	Product Dimensions
Colorimetric	1 (CL1) or 2 (CL2)	6 in. (for ISO gas)	Ethernet IP or Modbus	110-240 VAC 50/60 HZ	Height: 12.5" (32 cm) Width: 10.3" (26 cm) Depth: 9" (23 cm) Weight: 38 lb.

### BENEFITS:



Visit [DODtec.com](http://DODtec.com) for additional details or to shop genuine ChemLogic® Colorimetric Cassettes.

### DETECTABLE GASES:



Measures at  
Low PPB Levels

The CL1 / CL2 Gas Detector detects phosgene and diisocyanates at their lowest possible levels (parts per billion). It is the leading gas detection solution in the polyurethane foaming and engineered wood industries.

\*\* See the Measurable Gas List section for a reference of system-specific measurable gases.

# ChemLogic® Portable Gas Detector

## Series # CLPx

CLPx is a convenient, handheld gas detector suitable for a variety of applications. A robust optical system and automated calibration make the CLPx the most reliable and intuitive gas detector on the market.

It is a truly versatile instrument that can be configured to detect a variety of gases, eliminating the need to purchase different instruments or gas keys to sample different gases. Changing the instrument from detecting one gas to another requires a simple change of the cassette.



### FEATURES:

Detection Principle	Maximum Points	Maximum Distance	Data Logging	Power Requirements	Product Dimensions
Colorimetric	1	Point of Use	Data can be downloaded from device after event	NiMH Battery (included)	Height: 8.6" (22 cm) Width: 4.1" (10 cm) Depth: 11.3" (29 cm) Weight: 6 lbs.

### BENEFITS:

CONTINUOUS  
MONITORING

LOW  
MAINTENANCE

POLYUREATHANE  
FOAM MONITORING

SD CARD  
DATA LOGGING



Visit [DODtec.com](http://DODtec.com) for additional details or to shop genuine ChemLogic® Colorimetric Cassettes.

### DETECTABLE GASES:

TOXIC

CORROSIVE

Measures at Low PPB Levels

The CLPx detects phosgene and diisocyanates at their lowest possible levels (parts per billion). It is light weight and ready-to-use in any quick response or emergency situation.

\*\* See the Measurable Gas List section for a reference of system-specific measurable gases.

# Wearable Diisocyanates Detection

## IsoSense Personal Detection Kits

The IsoSense is a portable and economical sampling device ideal for measuring vapor and aerosol levels of isocyanate compounds down to 1 ppb. Specially designed for personal exposure evaluations, area surveys, and emergency response.

The IsoSense Sampling Kit includes an IsoSense pump unit, sample head, concentration calculator, flow test kit, 20 test strips, battery charger, manual and carrying case.



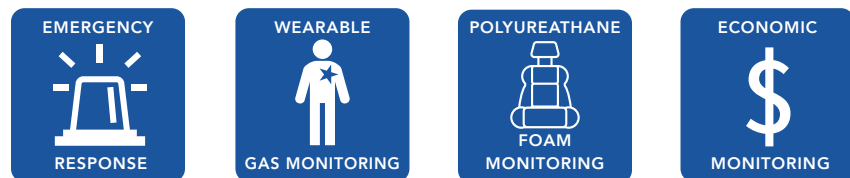
## Dosimeter Badges

Dosimeter badges have been a trusted and cost-effective form of gas detection for years. Badges worn by individuals change color when exposed to specific gases.

Badges available for detection of Phosgene, TDI, MDI, Hydrazine, Monomethyl Hydrazine.



### BENEFITS:







# INDUSTRIAL GAS DETECTION SOLUTIONS

State-of-the-art gas detection systems with advanced electrochemical, infrared & photoionization technologies.

Common Uses: oil and gas, wastewater treatment, first responders, confined space, automotive, cold storage, fertilizer manufacturing & rotating equipment





# Combustible Gas & Flame Detection



## Explosion-Proof Flammable Gas Detector

### Series # GTD-2000Tx

Continuous toxic gas and oxygen detector with flame proof housing approved to use in explosion hazardous area

- Class I, Div 1 detection
- Superior performance for detecting toxic gases below TLV
- Detects over 30 different toxic gases



## Explosion-Proof Toxic Gas Detector

### Series # GTD-2000Ex

Continuous flammable gas detector with flame proof housing approved to use in explosion hazardous area

- Class I, Div 1 detection
- Catalytic bead sensor that detects flammables at LEL %
- Detects all combustible gases (Hydrogen, Methane, etc.)



## Explosion-Proof Hydrocarbon Detector

### Series # GIR-3000

Continuous gas detector for flammable, CO<sub>2</sub>, CO and N<sub>2</sub>O hydrocarbon gases in an explosion hazardous area

- Class I, Div 1 detection
- State-of-the art infrared detection principle
- Ability to operate in non-oxygen environment



## Infrared Flame Detector

### Series # FLAMSPEC-IR3

Provides ultra-fast response and reliable detection of all types of hydrocarbon fires (visible and non-visible)

- Detection within 40 milliseconds of fireballs or explosions
- Operates in all weather and light conditions

Applications *for a*  
Wide Range *of* Industries



# Handheld Combustible Gas Detector

## Series # XP-3000II Series

The XP-3000II Series provides handheld gas detection for environmental safety and spot check applications. Its large digital display shows gas concentrations and levels at a glance. This lightweight and compact instrument includes a built-in sample pump, data-logging function, and an explosion proof structure.

### Each model includes:

- Gas sampling tube
- (4) alkaline AA batteries
- Instruction manual/inspection certificate
- Shoulder strap
- Filter element



### Handheld LEL Gas Detector (0-100%)

- For measurement of combustible gas concentrations of 0-100% LEL.
- Suitable for monitoring a risk of explosion.
- Built-in correction factors for up to five flammable gases.
- Detects up to 32 combustible gases when the target is set to Isobutane, Methane or Propane.



### Handheld PPM Gas Detector

- High sensitivity detector with 0–5000ppm or 0-10000ppm measuring range.
- Ideally suited for environmental safety and spot check applications
- Optional Data Logger software available
- Detects Methane, Isobutane, Propane, Ethanol, Hydrogen, Acetylene, Toulene, o-Xylene, Benzene



### Handheld Oxygen Detector

- Extractive oxygen concentration indicator.
- Convenient for measuring O2 concentration where sampling is difficult.
- Detects oxygen depletion.

**The XP-3000II Series is available in a range of configurations to satisfy your combustible gas detection needs.**

Target Gas	Model	XP-3310II	XP-3360II	XP-3360II-W	XP-3318II	XP-3368II	XP-3368II-W	XP-3380II
Combustible Gas	%LEL	●		●	●		●	
	ppm		●	●		●	●	
Oxygen					●	●	●	●

# Portable Clip-On Gas Detectors



## Clip-On 4 Gas Detector

### Series # XA-4400

Wearable and easy to use multi-gas detection clip that's always on. Two years of non-stop runtime with no charging, battery swap outs, or sensor changes. Once activated, you can rest assured that this four-gas detector is always on. Simultaneously detects Hydrogen Sulfide, Carbon Monoxide, Oxygen, and Combustibles.



## Clip-On VOC Detector

### Series # Cub VOC

Personal VOC gas detector worn within the breathing zone to detect volatile organic compounds, keeping you safe within your working environment. It's the world's smallest and lightest wearable VOC gas detector. When worker exposure exceeds pre-set limits the clip's audible, vibrating, and flashing LED alarms alert you to the gases present. Readings are displayed on its bright, back-lit LCD display with selectable data logging time.

H <sub>2</sub> S	CO
------------------	----



O <sub>2</sub>	SO <sub>2</sub>
----------------	-----------------



## Clip-On Single Gas Detector

### ARA Series

The clip-on single gas detector is a cost effective personal detector with 2 years of continuous operation. This wearable gas detector has only one button to make use simple and alerts workers when health levels exceed set safety levels. Four variations available for Hydrogen Sulfide, Carbon Monoxide, Oxygen, and Sulfur Dioxide.

Typical applications include:

- Site wide safety
- Confined space entry
- Plant shutdown processes
- First response safety

# Portable Handheld Gas Detectors



## Low Level VOC Detector

### Series # TIGER

Handheld VOC gas detector incorporates patented PID sensor technology with humidity resistance and anti-contamination design, proven to dramatically extend run time in the field. Detects gases down to low ppb levels up to 20,000 ppm. The internal gas table detects over 480 VOCs and toxic compounds.

---



## Gas and Helium Leak Detectors

### Series # G3 or TESLA

The G3 Series handheld features an advanced micro thermal conductivity sensor for effective gas leak detection. While the Tesla Series provides stable, repeatable helium readings as an economical alternative to mass spectrometers.

---



## SF6 Leak Detector

### Series # SF6000

Detector for mobile SF6 leak detection. It has a detection threshold of  $1 \times 10^{-6}$  mbar l/s, which makes it suitable for applications on SF6 switchgear. The easy to use, processor controlled portable SF6 leak monitor, features both an audible alarm and an LED bar graph display, allowing estimation if a small, medium or big leak is being detected.

---



## Mercury Vapor Indicator

### Series # MVI

Fast and accurate detector gives a real-time response and is ready to detect instantly. Provides continuous readings and offers two detection ranges: 0.1 to 199 and 1 to 1999 microgram/cubic meter. The instrument's dual-beam UV absorption technology means it does not saturate or need regenerating between readings eliminating downtime.



## Connected Worker Monitors



### Cellular Connected Safety Monitor

#### Series # G7c

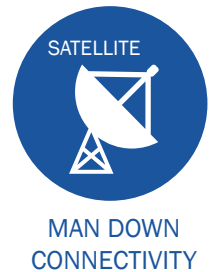
Wireless cellular integrated man down alarm equipped with a five gas monitor. In the event of an emergency, the G7c wirelessly connects your team members with live monitoring personnel to mobilize the fastest emergency response possible.



### Satellite Connected Safety Monitor

#### Series # G7x

This device defines a new level of lone worker monitoring. This innovative device uses Internet of Things (IoT) connectivity to keep your team always connected. The unit is powered by satellite bridge technology to keep you connected even in the most remote environments. Comes with a five gas monitor to identify potential hazard in the field.



**Any G7 Device can be Equipped with Standard 4-Gas Sensor**

**PLUS**

**A fifth selectable toxic sensor from a list of over ten choices**



### Connected Area Monitor

#### Series # G7 EXO

Direct-to-cloud area monitor that delivers ultimate visibility into your entire facility and workforce. With integrated 4G and optional satellite connectivity, G7 EXO automatically links to the cloud where it can integrate and work alongside employee-worn G7 devices.

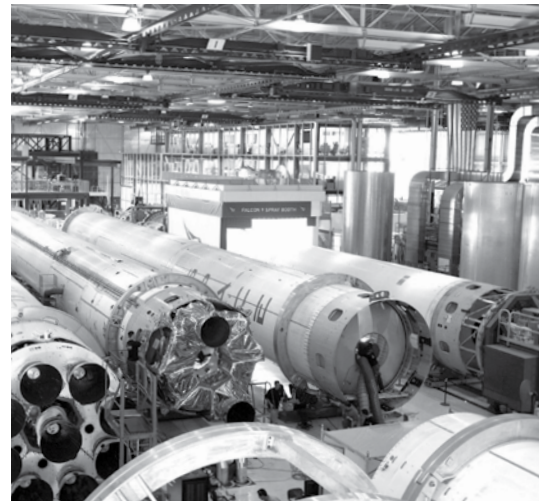




## COMMERCIAL GAS DETECTION SOLUTIONS

Gas detection from standalone units to fully engineered, multipoint systems, all offering cost effective regulatory compliance and safety at the places we live and work

Common Uses: parking structures, chillers, mechanical rooms, office towers, commercial buildings, golf courses, schools and universities, laboratories





## 64-Point Controller



### Series # PS-7064

Offers simultaneous display and alarm functions for up to 64 input variables. Versatile functionality for commercial and light industrial applications. Accepts inputs from digital and/or analog transmitters. Easy to configure and user friendly.

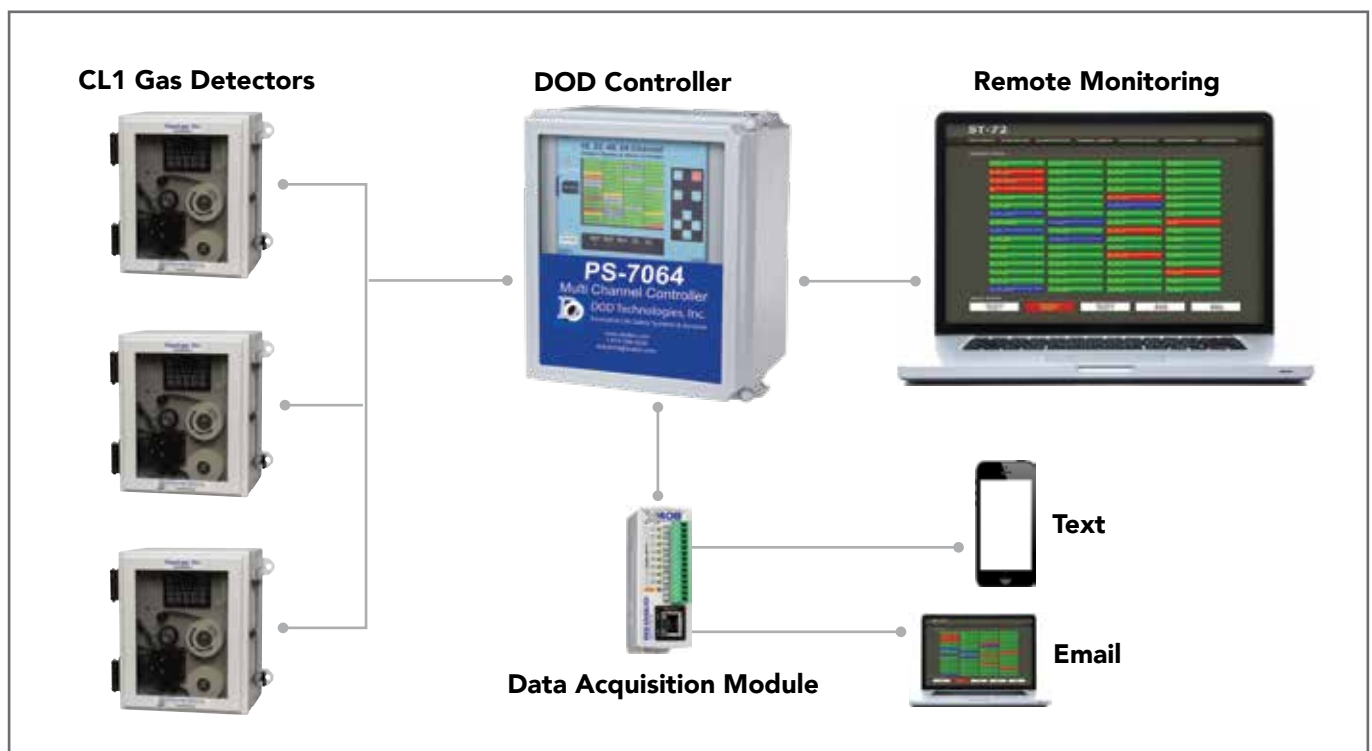
## 16-Point Controller

### Series # PS-7016

Provides simultaneous display and alarm with I/O modules arranged in groups of 8 channels (up to 16) to allow economical configurations of systems. Accepts inputs from digital and/or analog transmitters. Simple to configure.

## ChemLogic TDI/MDI Monitoring System

A complete ChemLogic® Gas Monitoring System can be established utilizing a DOD Technologies Controller. Systems can survey up to 64 channels per controller for convenient remote monitoring.



## Fixed Gas Detection



### Parking Garage Detector

#### Series # LPT-P

Economical, three channel, digital transmitter that is designed to be part of a gas detection system for enclosed parking facilities. Monitors CO, NO<sub>2</sub>, Hydrogen. Methane, Propane.

---



### Digital Toxic Gas Detector

#### Series # cGas

One or two channel digital gas detection transmitter that offers great flexibility at a lower cost.

---



### Analog Toxic Gas Detector

#### Series # LPT-A

One or two channel analog gas detection transmitter that offers great flexibility at a lower cost.

#### Detectable Gases for cGas & LPT-A:

- |                    |                     |                    |
|--------------------|---------------------|--------------------|
| • Ammonia          | • Fluorine          | • Nitric Oxide     |
| • Arsine           | • Formaldehyde      | • Nitrogen Dioxide |
| • Carbon Dioxide   | • Hydrogen          | • Oxygen           |
| • Carbon Monoxide  | • Hydrogen Chloride | • Ozone            |
| • Chlorine         | • Hydrogen Cyanide  | • Phosphine        |
| • Chlorine Dioxide | • Hydrogen Fluoride | • Silane           |
| • Ethylene         | • Hydrogen Sulfide  | • Sulphur Dioxide  |
| • Ethylene Oxide   | • Methane           | • TVOCs            |
- 



### Combustible / VOC Gas Detector

#### Series # ESH-A

Remote sensor offers flexible location monitoring of combustible gases or PID TVOCs and light industrial applications. Monitors Hydrogen, Methane, Propane, TVOCs.

---



### Infrared Refrigerant Detector

#### Series # ART

Single channel refrigerant detector that can be used as a standalone system or integrated into a building. Accurately detects refrigerant gas leaks without cross interference.



# Indoor Air Quality (IAQ) Monitoring

## 8-Channel IAQ Monitor



### Series # 1540-0009 / 1540-2009

Handheld gas monitor that provides a quick, easy and accurate way to monitor carbon dioxide, oxygen, temperature and relative humidity in incubators. Used for intermittent or continuous indoor air quality monitoring of temperature, RH, particulates, and up to 5 gases simultaneously.

Applications include:

- Hospitals
- Laboratories
- IVF Facilities
- Poultry Incubators
- Infant Incubators
- Bacteriological Incubators
- Biomedical Research Facilities

## 15-Channel IAQ Monitor



### Series # YES-PLUS

Tabletop gas monitor that provides a quick, easy and accurate way to monitor carbon dioxide, oxygen, temperature and relative humidity in incubators. Used for intermittent or continuous indoor air quality monitoring of temperature, RH, particulates, and up to 12 gases simultaneously.

### **Detectable Gases for 8- and 15-Channel Monitors:**

- |                    |                     |                    |
|--------------------|---------------------|--------------------|
| • Ammonia          | • Fluorine          | • Nitric Oxide     |
| • Arsine           | • Formaldehyde      | • Nitrogen Dioxide |
| • Carbon Dioxide   | • Hydrogen          | • Oxygen           |
| • Carbon Monoxide  | • Hydrogen Chloride | • Ozone            |
| • Chlorine         | • Hydrogen Cyanide  | • Phosphine        |
| • Chlorine Dioxide | • Hydrogen Fluoride | • Silane           |
| • Ethylene         | • Hydrogen Sulfide  | • Sulphur Dioxide  |
| • Ethylene Oxide   | • Methane           | • TVOCs            |

# Steel Dust Monitor



## Grease Steel Dust Monitor

### Series # SDM-72

Checks the wear conditions of bearings in ultra-low to high speed rotating machinery that uses grease as lubrication oil.

- Equipped with auto zero function
- Less than 1 ml sample needed to test
- 30 hours runtime on 4 x AA batteries



## Oil Steel Dust Monitor

### Series # SDM-73

Checks the wear conditions of hydraulic systems in ultra-low to high speed rotating machinery that uses oil as lubrication oil.

- Equipped with auto zero function
- Only 1.5 ml sample needed to test
- 30 hours runtime on 4 x AA batteries

## Quick & Easy to Operate



Take a grease sample with spatula, wipe it in the sample case



Insert grease sample into the "SAMPLE" port



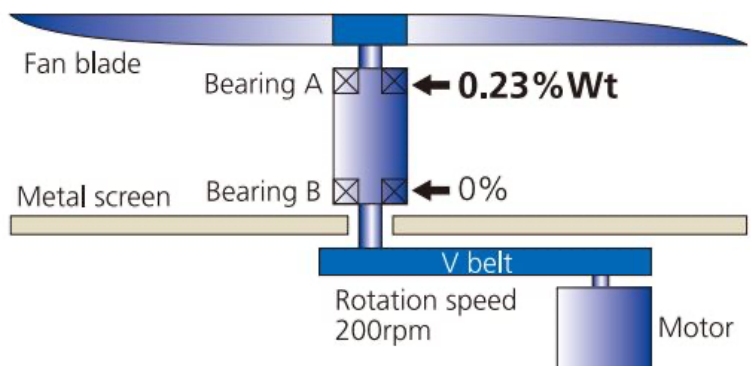
The unit measures and displays the steel dust density automatically

## Case Study: Heat Exchanger Fan Bearing

### Detection of Flaking in Fan Bearing

In this case, vibration level of the entire heat exchanger fan frame had increased. Bearing flaking (on A side) was diagnosed by measuring the density of steel dust in the bearing grease. Generally, heat exchanger fans experience greater pressure pulsations on the fan blade side at low rotation speeds, making it difficult to diagnose bearing condition using the vibration meter. Testing for steel dust ensures performance and protects the asset over the long run.

### Results of measuring density of steel dust in grease



# ChemLogic® Colorimetric Measurable Gases

Measurable Gas	FORMULA	CAS NUMBER	Range*	CLPx	CL1	CL2	CL4	CL8	CL96
Acetic Acid	CH <sub>3</sub> CO <sub>2</sub> H	64-19-7	50 ppb	-	-	-	-	•	-
Ammonia	NH <sub>3</sub>	7664-41-7	75 ppm	•	•	•	•	•	•
Arsenic Pentafluoride^	AsF <sub>5</sub> (HF)	7784-36-3	10 ppm	•	•	•	•	•	•
Arsenic Trichloride^^	AsHCl <sub>3</sub> (HCl)	7784-34-1	15 ppm	•	•	•	•	•	•
Arsenic Trifluoride^	AsF <sub>3</sub> (HF)	7784-35-2	10 ppm	•	•	•	•	•	•
Arsine	AsH <sub>3</sub>	7784-42-1	500 ppb	•	•	•	•	•	•
Arsine	AsH <sub>3</sub>	7784-42-1	50 ppb	•	•	•	•	•	•
Boron Tribromide^^^	BBr <sub>3</sub> (HBr)	10294-33-4	20 ppm	•	•	•	•	•	•
Boron Trichloride^^	BCl <sub>3</sub> (HCl)	10294-34-5	15 ppm	•	•	•	•	•	•
Boron Trifluoride	BF <sub>3</sub>	7637-07-02	10000 ppb	-	-	-	•	•	-
Boron Trifluoride	BF <sub>3</sub>	7637-07-02	5000 ppb	•	-	-	-	-	-
Boron Trifluoride	BF <sub>3</sub>	7637-07-02	3200 ppb	-	•	•	•	•	•
Bromine	Br <sub>2</sub>	7726-95-6	1000 ppb	•	•	•	•	•	•
Carbon Sulfide	COS	463-58-1	20 ppm	•	•	•	•	•	•
Carbonyl Fluoride^	COF <sub>2</sub> (HF)	353-50-4	10 ppm	•	•	•	•	•	•
Chlorine	Cl <sub>2</sub>	7782-50-5	5000 ppb	•	•	•	•	•	•
Chlorine	Cl <sub>2</sub>	7782-50-5	3200 ppb	-	•	•	•	•	•
Chlorine	Cl <sub>2</sub>	7782-50-5	2000 ppb	•	•	•	•	•	•
Chlorine	Cl <sub>2</sub>	7782-50-5	30 ppb	-	•	•	•	•	•
Chlorine	Cl <sub>2</sub>	7782-50-5	20 ppb	•	-	-	-	-	-
Chlorine Trifluoride^	ClF <sub>3</sub> (HF)	7790-91-2	10 ppm	•	•	•	•	•	•
Cyclohexane Diisocyanate	CHDI		100 ppb	-	•	-	-	-	-
Diborane	B <sub>2</sub> H <sub>6</sub>	19287-45-7	1000 ppb	•	•	•	•	•	•
Dichlorosilane^^	SiH <sub>3</sub> Cl <sub>2</sub> (HCl)	4109-96-0	15 ppm	•	•	•	•	•	•
Difluoromethane**	CH <sub>2</sub> F <sub>2</sub>	75-10-5	40 ppm	•	-	-	-	-	-
Dimethylamine	DMA	124-40-3	50000 ppb	•	-	-	-	-	-
Fluorine	F <sub>2</sub>	7782-41-4	3200 ppb	•	•	•	•	•	•
Fluoromethane**	CH <sub>3</sub> F	593-53-3	40 ppm	•	-	-	-	-	-
Fluosilic Acid^	H <sub>2</sub> SiF <sub>6</sub> (HF)	16961-83-4	10 ppm	•	•	•	•	•	•
Formic Acid	CH <sub>2</sub> O <sub>2</sub>	64-18-6	10 ppm	•	-	-	-	-	-
Germane	GeH <sub>4</sub>	7782-65-2	2000 ppb	•	•	•	•	•	•
Germanium Tetrafluoride^	GeF <sub>4</sub> (HF)	7783-58-6	10 ppm	•	•	•	•	•	•
Hexachlorodisilane^^	SiCl <sub>2</sub> (HCl)	13465-77-5	15 ppm	•	•	•	•	•	•
Hexafluorocyclobutene**	C <sub>4</sub> F <sub>6</sub>	692-50-2	40 ppm	•	-	-	-	-	-
Hexafluorocyclobutene**	C <sub>4</sub> F <sub>6</sub>	692-50-2	40 ppm	-	-	-	-	•	•
Hexamethylene Diisocyanate	HDI	822-06-0	200 ppb	•	-	-	-	-	-
Hexamethylene Diisocyanate	HDI	822-06-0	100 ppb	-	•	-	-	-	-

## ChemLogic® Colorimetric Measurable Gases, cont.

Measurable Gas	FORMULA	CAS NUMBER	Range*	CLPx	CL1	CL2	CL4	CL8	CL96
HMDI	HMDI	5124-30-1	100 ppb	•	•	-	-	-	-
Hydrazine	N2H4	302-01-2	500 ppb	•	•	•	•	•	-
Hydrochloric Acid	HCl	7647-01-0	15 ppm	•	•	•	•	•	•
Hydrochloric Acid	HCl	7647-01-0	3250 ppb	-	-	-	•	•	-
Hydrogen Bromide	HBr	10035-10-6	20 ppm	•	•	•	•	•	•
Hydrogen Cyanide	HCN	74-90-8	20 ppm	•	-	-	-	-	-
Hydrogen Cyanide	HCN	74-90-8	2500 ppb	-	•	•	•	•	•
Hydrogen Fluoride	HF	7669-39-3	10 ppm	•	•	•	•	•	•
Hydrogen Selenide	H2Se	7783-07-5	500 ppb	•	•	•	•	•	•
Hydrogen Sulfide	H2S	7783-06-4	1500 ppb	-	•	•	•	•	•
Hydrogen Sulfide	H2S	7783-06-4	500 ppb	-	•	•	•	•	•
Hydrogen Sulfide	H2S	7783-06-4	90 ppb	•	•	•	•	•	•
Hydrogen Sulfide	H2S	7783-06-4	50 ppm	•	•	•	•	•	-
Hydrogen Sulfide	H2S	7783-06-4	20 ppm	•	•	•	•	•	•
Hydrogen Sulfide	H2S	7783-06-4	5 ppm	-	•	•	•	•	•
Isophorone Diisocyanate	IPDI	4098-71-9	200 ppb	•	-	-	-	-	-
Isophorone Diisocyanate	IPDI	4098-71-9	100 ppb	-	•	-	-	-	-
Methylene Diphenyl Diisocyanate	MDI	101-68-8	200 ppb	•	•	-	-	-	-
Methylene Diphenyl Diisocyanate	MDI	101-68-8	100 ppb	-	•	-	-	-	-
Methylene Isocyanate	MIC	624-83-9	100 ppm	-	•	•	•	•	•
Methylene Isocyanate	MIC	624-83-9	10 ppm	-	•	•	•	•	•
Nitric Acid	HNO3	7697-37-2	6000 ppb	•	-	-	-	-	-
Nitric Acid	HNO3	7697-37-2	5000 ppb	-	•	•	•	•	•
Nitrogen Dioxide	NO2	10102-44-0	100 ppm	-	•	•	•	•	•
Nitrogen Dioxide	NO2	10102-44-0	30 ppm	-	•	•	•	•	•
Nitrogen Dioxide	NO2	10102-44-0	25 ppm	•	-	-	-	-	-
Nitrogen Trifluoride	NF3	7783-54-2	50ppm	•	-	-	-	-	-
Nitrogen Trifluoride**	NF3	7783-54-2	20ppm	-	-	-	-	•	-
Octafluorocyclopentene**	C5F8	559-40-0	15ppm	-	-	-	-	•	-
Ozone	O3	10028-15-6	300 ppb	•	-	-	-	-	-
Phenyl Trichlorosilane^^	SiCl3Ph (HCl)	98-13-5	15 ppm	•	•	•	•	•	•
Phosgene	COCl2	75-44-5	5000 ppb	-	•	•	•	•	•
Phosgene	COCl2	75-44-5	4000 ppb	-	•	•	•	•	-
Phosgene	COCl2	75-44-5	3250 ppb	-	•	•	•	•	•
Phosgene	COCl2	75-44-5	3000 ppb	•	•	•	•	•	-
Phosgene	COCl2	75-44-5	1000 ppb	-	•	•	•	•	-
Phosgene	COCl2	75-44-5	900 ppb	-	•	•	•	•	-



# ChemLogic® Colorimetric Measurable Gases, cont.

Measureable Gas	FORMULA	CAS NUMBER	Range*	CLPx	CL1	CL2	CL4	CL8	CL96
Phosgene	COCl <sub>2</sub>	75-44-5	300 ppb	-	•	•	•	•	•
Phosgene	COCl <sub>2</sub>	75-44-5	90 ppb	•	-	-	-	-	-
Phosphine	PH <sub>3</sub>	7803-51-2	300 ppb	-	•	•	•	•	•
Phosphine	PH <sub>3</sub>	7803-51-2	1500 ppb	•	•	•	•	•	•
Phosphorus Oxychloride^^	POCl <sub>3</sub> (HCl)	10025-87-3	15 ppm	•	•	•	•	•	•
Phosphorus Pentachloride^^	PCl <sub>5</sub> (HCl)	10026-13-8	15 ppm	•	•	•	•	•	•
Phosphorus Pentafluoride^	PF <sub>5</sub> (HF)	7647-19-0	10 ppm	•	•	•	•	•	•
Phosphorus Tribromide^^^	PBr <sub>3</sub> (HBr)	7789-60-8	20 ppm	•	•	•	•	•	•
Phosphorus Trichloride^^	PCl <sub>3</sub> (HCl)	7719-12-2	15 ppm	•	•	•	•	•	•
Phosphorus Trifluoride^	PF <sub>3</sub> (HF)	7783-55-3	10 ppm	•	•	•	•	•	•
Silane	SiH <sub>4</sub>	7803-62-5	50 ppm	•	•	•	•	•	•
Silicon Tetrachloride^^	SiCl <sub>4</sub> (HCl)	10026-04-7	15 ppm	•	•	•	•	•	•
Silicon Tetrafluoride ^	SiF <sub>4</sub> (HF)	7783-61-1	10 ppm	•	•	•	•	•	•
Stibine	SbH <sub>3</sub>	7803-52-3	500 ppb	-	•	•	•	•	•
Sulfur Dioxide	SO <sub>2</sub>	7746-09-5	2500 ppb	-	•	•	•	•	•
Sulfur Dioxide	SO <sub>2</sub>	7746-09-5	2500 ppb	•	-	-	-	-	-
Sulfur Hexafluoride	SF <sub>6</sub>	2551-62-4	2000 ppm	•	-	-	-	-	-
Sulfur Tetrafluoride^	SF <sub>4</sub> (HF)	7786-60-0	10 ppm	•	•	•	•	•	•
Sulfuric Acid	H <sub>2</sub> SO <sub>4</sub>	7764-93-9	750 ppb	•	•	-	-	-	-
Sulfuric Acid	H <sub>2</sub> SO <sub>4</sub>	7764-93-9	3200 ppb	-	•	•	•	•	•
Tetrafluorosilane^	SiF <sub>4</sub> (HF)	7783-61-1	10 ppm	•	•	•	•	•	•
Tetrakis(dimethylamido)titanium	TDMAT	3275-24-9	20000 ppb	•	-	-	-	-	-
Tin Tetrachloride^^	SnCl <sub>4</sub> (HCl)	7646-78-8	15 ppm	•	•	•	•	•	•
Titanium Tetrachloride^^	TiCl <sub>4</sub> (HCl)	7550-45-0	15ppm	•	•	•	•	•	•
Toluene Diisocyanate	TDI	584-84-9	100 ppb	-	•	-	-	-	-
Toluene Diisocyanate	TDI	584-84-9	200 ppb	•	•	-	-	-	-
Toulene Diamine	TDA	95-80-7	60 ppb	-	•	-	-	-	-
Trichlorosilane^^	SiHCl <sub>3</sub> (HCl)	10025-78-2	15 ppm	•	•	•	•	•	•
Trimethylamine	TMA	75-50-3	50000 ppb	•	-	-	-	-	-
Tungsten Hexafluoride^	WF <sub>6</sub> (HF)	7783-82-6	10 ppm	•	•	•	•	•	•
Velcorin	DMDC	4525-33-1	500 ppb	•	-	-	-	-	-
Velcorin	DMDC	4525-33-1	200 ppb	-	•	•	•	•	•

CLPx data pertains to software version 19.04, build 991 and above. Contact DOD to confirm for versions 990 and below.

\* Not all ranges available for every product. Please contact DOD Technologies for additional requests.

\*\* Requires pyrolyzer option for detection

^ Compounds which hydrolyze to HF

^^ Compounds which hydrolyze to HCl

^^^ Compounds which hydrolyze to HBr

## New Cosmos PS-7 Measurable Gases

PS-7 GAS SENSOR	FORMULA	RANGE	LDL	ALARM LEVEL 1	ALARM LEVEL2	SENSOR PART NUMBER
Acetic Acid	CH <sub>3</sub> COOH	0-2000 ppm	100 ppm	200 ppm	400 ppm	CHS-7-F2K60
Acetone	C <sub>3</sub> H <sub>6</sub> O	0-5000 ppm	500 ppm	500 ppm	1000 ppm	CHS-7-F2W40
Acetone	C <sub>3</sub> H <sub>6</sub> O	0-2000 ppm	100 ppm	200 ppm	400 ppm	CHS-7-F2W60
Acetonitrile	CH <sub>3</sub> CN	0-5000 ppm	250 ppm	500 ppm	1000 ppm	CHS-7-F2Z40-CH <sub>3</sub> CN
Acetylene	C <sub>2</sub> H <sub>2</sub>	0-100% LEL	5% LEL	10% LEL	20% LEL	CHS-7-C2F10-C <sub>2</sub> H <sub>2</sub>
Acetylene	C <sub>2</sub> H <sub>2</sub>	0-5000 ppm	250 ppm	500 ppm	1000 ppm	CHS-7-F2F40-C <sub>2</sub> H <sub>2</sub>
Acetylene	C <sub>2</sub> H <sub>2</sub>	0-2000 ppm	50 ppm	200 ppm	400 ppm	CHS-7-F2F60-C <sub>2</sub> H <sub>2</sub>
Ammonia	NH <sub>3</sub>	0-100 ppm	5 ppm	10 ppm	20 ppm	CDS-7-7BNH56
Arsine	AsH <sub>3</sub>	0-0.25 ppm	0.012 ppm	0.025 ppm	0.050 ppm	CDS-7-07AH76
Benzene	C <sub>6</sub> H <sub>6</sub>	0-200 ppm	10 ppm	20 ppm	40 ppm	CHS-7F8Z90
Butadiene	C <sub>4</sub> H <sub>6</sub>	0-5000 ppm	250 ppm	500 ppm	1000 ppm	CHS-7-F2I40-C <sub>4</sub> H <sub>6</sub>
Butyl Acetate	C <sub>6</sub> H <sub>12</sub> O <sub>2</sub>	0-2000 ppm	200 ppm	500 ppm	1000 ppm	CHS-7-F2Z60BA
Carbon Monoxide	CO	0-250 ppm	12 ppm	25 ppm	50 ppm	CDS-07CO60
Carbon Monoxide	CO	0-100 ppm	5 ppm	10 ppm	20 ppm	CDS-7-07CO56
Chlorine	Cl <sub>2</sub>	0-5 ppm	0.25 ppm	0.5 ppm	1.0 ppm	CDS-7-7BCL16
Chlorine	Cl <sub>2</sub>	0-1.5 ppm	0.075 ppm	0.20 ppm	0.40 ppm	CDS-7-7BCLK0
Chlorine (non-standard range)	Cl <sub>2</sub>	0-10 ppm	0.5 ppm	1.0 ppm	2.0 ppm	CDS-7BCL20
Chlorine Trifluoride	ClF <sub>3</sub>	0-1 ppm	0.05 ppm	0.10 ppm	0.20 ppm	CDS-7-07CF00
Chlorobenzene	C <sub>6</sub> H <sub>5</sub> Cl	0-500 ppm	100 ppm	200 ppm	400 ppm	CHS-7-F5R50-CB
Chlorodifluoromethane (R22)	CHClF <sub>2</sub>	0-2000 ppm	100 ppm	400 ppm	800 ppm	CHS-7-F5R60-CHClF <sub>2</sub>
Chloroform	CHCl <sub>3</sub>	0-2000 ppm	100 ppm	200 ppm	400 ppm	CHS-7F5Z60-CHCl <sub>3</sub>
Diborane	B <sub>2</sub> H <sub>6</sub>	0-0.5 ppm	0.025 ppm	0.05 ppm	0.10 ppm	CDS-7-7BBH86
Dichlorosilane	SiH <sub>2</sub> Cl <sub>2</sub>	0-25 ppm	1.25 ppm	2.5 ppm	5.0 ppm	CDS-7-7BDC36
Difluoromethane (R32)	CH <sub>2</sub> F <sub>2</sub>	0-2000 ppm	100 ppm	200 ppm	400p ppm	CHS-7-7J20R60-CH <sub>2</sub> F <sub>2</sub>
Dimethylamine	(CH <sub>3</sub> ) <sub>2</sub> NH	0-50 ppm	2.5 ppm	5.0 ppm	10 ppm	CDS-7-7BDA40
Dimethylamine	(CH <sub>3</sub> ) <sub>2</sub> NH	0-15 ppm	0.75 ppm	1.5 ppm	3.0 ppm	CDS-7-7BDAQ0
Dimethylamine	(CH <sub>3</sub> ) <sub>2</sub> NH	0-25 ppm	1.25 ppm	2.5 ppm	5.0 ppm	CDS-7-7BDA30
1,4 Dioxane	C <sub>4</sub> H <sub>8</sub> O <sub>2</sub>	0-5000 ppm	250 ppm	1,000 ppm	2,000 ppm	CHS-7-F2Z40Di
1,4 Dioxane	C <sub>4</sub> H <sub>8</sub> O <sub>2</sub>	0-2000 ppm	100 ppm	400 ppm	800 ppm	CHS-7-F2Z60Di
Disilane	Si <sub>2</sub> H <sub>6</sub>	0-25 ppm	1.25 ppm	2.5 ppm	5.0 ppm	CDS-07DS30
Disilane	Si <sub>2</sub> H <sub>6</sub>	0-5 ppm	0.25 ppm	0.5 ppm	1.0 ppm	CDS-07DS10
Ethane (less interference to others)	C <sub>2</sub> H <sub>6</sub>	0-5000 ppm	25 ppm	50 ppm	100 ppm	CHS-7-F2Z40
Ethane (less interference to H <sub>2</sub> /IPA)	C <sub>2</sub> H <sub>6</sub>	0-5000 ppm	25 ppm	50 ppm	100 ppm	CHS-7-F1Z40
Ethanol	C <sub>2</sub> H <sub>6</sub> O	0-5000 ppm	250 ppm	500 ppm	1000 ppm	CHS-7-F22N40
Ethanol (w/ Toluene correlation curve)	C <sub>2</sub> H <sub>6</sub> O	0-5000 ppm	250 ppm	500 ppm	1000 ppm	CHS-7-F2N40T

## New Cosmos PS-7 Measurable Gases, cont.

PS-7 GAS SENSOR	FORMULA	RANGE	LDL	ALARM LEVEL 1	ALARM LEVEL2	SENSOR PART NUMBER
Ethanol	C <sub>2</sub> H <sub>6</sub> O	0-100% LEL	5% LEL	10% LEL	20% LEL	CHS-7C2N10-C <sub>2</sub> H <sub>6</sub> O
Ethanol	C <sub>2</sub> H <sub>6</sub> O	0-500 ppm	25 ppm	50 ppm	100 ppm	CHS-7-F9N50-C <sub>2</sub> H <sub>6</sub> O
Ethanol	C <sub>2</sub> H <sub>6</sub> O	0-2000 ppm	100 ppm	200 ppm	400 ppm	CHS-7-F2N60-C <sub>2</sub> H <sub>6</sub> O
Ethylene	C <sub>2</sub> H <sub>4</sub>	0-100% LEL	5% LEL	10% LEL	20% LEL	CHS-7-C2Z10-C <sub>2</sub> H <sub>4</sub>
Ethylene	C <sub>2</sub> H <sub>4</sub>	0-2000 ppm	100 ppm	200 ppm	400 ppm	CHS-7-F2Z60-C <sub>2</sub> H <sub>4</sub>
Ethylene Oxide (EO)	CH <sub>2</sub> CH <sub>2</sub> O	0-5000 ppm	250 ppm	500 ppm	1000 ppm	CHS-7-F2Z40EO
Ethylene Oxide (EO)	CH <sub>2</sub> CH <sub>2</sub> O	0-2000 ppm	100 ppm	200 ppm	400 ppm	CHS-7-F2Z60EO
Fluorine	F <sub>2</sub>	0-5 ppm	0.25 ppm	0.5 ppm	1.0 ppm	CDS-7-07F216
Fluorine	F <sub>2</sub>	0-3ppm	0.15ppm	0.3 ppm	0.6 ppm	CDS-7-07F2MO
Formaldehyde	CH <sub>2</sub> O	0-200ppm	10 ppm	50 ppm	100ppm	CHS-7-F9Z90-CH <sub>2</sub> O
Gasoline	C <sub>8</sub> H <sub>18</sub>	0-100% LEL	5% LEL	10% LEL	20% LEL	CHS-7-C2Z10
Gasoline	C <sub>8</sub> H <sub>21</sub>	5000 ppm	250 ppm	500 ppm	1000 ppm	CHS-7-F2Z40GL
Gasoline	C <sub>8</sub> H <sub>19</sub>	1000 ppm	50 ppm	100 ppm	200 ppm	CHS-7-F2Z70GL
Gasoline	C <sub>8</sub> H <sub>20</sub>	2000 ppm	100 ppm	200 ppm	400 ppm	CHS-7-F2Z60GL
Germane	GeH <sub>4</sub>	0-1 ppm	0.05 ppm	0.10 ppm	0.20 ppm	CDS-7-07GH06
Hexafluorobutadiene	C <sub>4</sub> F <sub>6</sub>	0-2000 ppm	100 ppm	200 ppm	400 ppm	CHS-7-7J20Z60-C <sub>4</sub> F <sub>6</sub>
n-Hexane	C <sub>6</sub> H <sub>14</sub>	0-2000 ppm	100 ppm	200 ppm	400 ppm	CHS-7-F2Z60-C <sub>6</sub> H <sub>14</sub>
n-Hexane	C <sub>6</sub> H <sub>14</sub>	0-200 ppm	10 ppm	20 ppm	40 ppm	CHS-7-F8Z90
Hexane	C <sub>6</sub> H <sub>14</sub>	0-100% LEL	5% LEL	10%LEL	20%LEL	CHS-7-C2Z10H-C <sub>6</sub> H <sub>14</sub>
Hydrogen (H <sub>2</sub> specific)	H <sub>2</sub>	0-10k ppm	500 ppm	1000 ppm	2000 ppm	CHS-7-F2E99-H <sub>2</sub>
Hydrogen (H <sub>2</sub> specific)	H <sub>2</sub>	0-2000 ppm	100 ppm	200 ppm	400 ppm	CHS-7F3E60
Hydrogen (H <sub>2</sub> specific)	H <sub>2</sub>	0-1000 ppm	50 ppm	100 ppm	200 ppm	CHS-7F3E70
Hydrogen Sensor (will not detect CH <sub>4</sub> )	H <sub>2</sub>	0-100% LEL	5% LEL	10% LEL	20% LEL	CHS-7-C2E10-H <sub>2</sub>
Hydrogen Bromide	HBr	0-10 ppm	0.5 ppm	1.0 ppm	2.0 ppm	CDS-7-7BHB26
Hydrogen Chloride	HCL	0-25 ppm	1.25 ppm	2.5 ppm	5.0 ppm	CDS-7-7BHC36
Hydrogen Chloride	HCL	0-5 ppm	0.25 ppm	0.5 ppm	1.0 ppm	CDS-7-7BHC16
Hydrogen Fluoride	HF	0-10 ppm	0.5 ppm	1 ppm	2 ppm	CDS-7-7CHF26
Hydrogen Fluoride	HF	0-2.5ppm	0.12 ppm	0.25 ppm	0.50 ppm	CDS-7-7CHFD6
Hydrogen Selenide	H <sub>2</sub> Se	0-250 ppb	0.012 ppm	0.025 ppm	0.050 ppm	CDS-7-7BSE76
Hydrogen Sulfide	H <sub>2</sub> S	0-50 ppm	2.5 ppm	5.0 ppm	10.0 ppm	CDS-07HS40
Hydrogen Sulfide	H <sub>2</sub> S	0-10 ppm	0.5ppm	1 ppm	2.0 ppm	CDS-7-07HS20
Hydrogen Sulfide (non-standard range)	H <sub>2</sub> S	0-5 ppm	0.25 ppm	0.5 ppm	1.0 ppm	CDS-7-07HS10
Iso-butane	i-C <sub>4</sub> H <sub>10</sub>	0-5000 ppm	250 ppm	500 ppm	1000 ppm	CHS-7-F2L40
Iso-butane	i-C <sub>4</sub> H <sub>10</sub>	0-2000 ppm	100 ppm	200 ppm	400 ppm	CHS-7-F2L60
Isobutylene	CH <sub>2</sub> =C(CH <sub>3</sub> ) <sub>2</sub>	0-2000 ppm	100 ppm	200 ppm	400 ppm	CHS-7-F2Z60IB
Isopropyl alcohol (IPA)	C <sub>3</sub> H <sub>8</sub> O	0-100% LEL	5% LEL	20% LEL	40% LEL	CHS-7-C2S10-IPA

## New Cosmos PS-7 Measurable Gases, cont.

PS-7 GAS SENSOR	FORMULA	RANGE	LDL	ALARM LEVEL 1	ALARM LEVEL2	SENSOR PART NUMBER
Isopropyl alcohol (IPA)	C <sub>3</sub> H <sub>8</sub> O	0-5000 ppm	250 ppm	500 ppm	1000 ppm	CHS-7-J20S40-IPA
Isopropyl alcohol (IPA)	C <sub>3</sub> H <sub>8</sub> O	0-2000 ppm	100 ppm	200 ppm	400 ppm	CHS-7F2S60
LPG (Iso-butane basis)	i-C <sub>4</sub> H <sub>10</sub>	0-100% LEL	5% LEL	10% LEL	20% LEL	CHS-7-C2A10
LPG (Iso-butane basis)	i-C <sub>4</sub> H <sub>10</sub>	2000 ppm	100 ppm	200 ppm	400 ppm	CHS-7-F2A60
Methane General Combustible	CH <sub>4</sub>	0-100% LEL	5% LEL	10% LEL	20% LEL	CHS-7-C1C10-CH <sub>4</sub>
Methane General Combustible	CH <sub>4</sub>	0-5000 ppm	250 ppm	500 ppm	1000 ppm	CHS-7F2C40
Methane General Combustible	CH <sub>4</sub>	0-2000 ppm	100 ppm	200 ppm	400 ppm	CHS-7F2C60
Methane Selective (will not detect H <sub>2</sub> )	CH <sub>4</sub>	0-10k ppm	500 ppm	50 ppm	100 ppm	CHS-7F1C90
Methane Selective (will not detect H <sub>2</sub> )	CH <sub>4</sub>	0-1000 ppm	50 ppm	100 ppm	200 ppm	CHS-7F1C70
Methanol	CH <sub>3</sub> OH	0-100% LEL	5% LEL	10% LEL	20% LEL	CHS-7-C2M10-CH <sub>3</sub> OH
Methanol	CH <sub>3</sub> OH	0-5000 ppm	250 ppm	500 ppm	1000 ppm	CHS-7-F2M40
Methanol	CH <sub>3</sub> OH	0-2000 ppm	100 ppm	200 ppm	400 ppm	CHS-7-7J20M60-CH <sub>3</sub> OH
Methyl Bromide	CH <sub>3</sub> Br	0-2000 ppm	100 ppm	200 ppm	400 ppm	CHS-7-F5Z60-CH <sub>3</sub> BR
Methyl Chloride	CH <sub>3</sub> CL	0-1000 ppm	50 ppm	100 ppm	200 ppm	CHS-7-F5Z70-CH <sub>3</sub> CL
Methyl Ethyl Ketone (MEK)	CH <sub>3</sub> C(O) CH <sub>2</sub> CH <sub>3</sub>	0-100% LEL	5% LEL	10% LEL	20% LEL	CHS-7-C2Q10-MEK
Methyl Ethyl Ketone (MEK)	CH <sub>3</sub> C(O) CH <sub>2</sub> CH <sub>3</sub>	0-2000 ppm	100 ppm	200 ppm	400 ppm	CHS-7-J20Q60-MEK
Methyl Ethyl Ketone (MEK)	CH <sub>3</sub> C(O) CH <sub>2</sub> CH <sub>3</sub>	0-1000 ppm	50 ppm	100 ppm	200 ppm	CHS-7-J20Q70-MEK
Methyl Fluoride (R41)	CH <sub>3</sub> F	0-3000 ppm	300 ppm	500 ppm	1000 ppm	CHS-7-F5R90-CH <sub>3</sub> F
Methyl Fluoride (R41)	CH <sub>3</sub> F	0-2000 ppm	100 ppm	200 ppm	400 ppm	CHS-7-7J20R60-CH <sub>3</sub> F
Methyl Pyrrolidinoner NMP	C <sub>5</sub> H <sub>9</sub> NO	0-2000 ppm	100 ppm	200 ppm	400 ppm	CHS-7-F2Z60-NMP
Methylene Chloride	CH <sub>2</sub> Cl <sub>2</sub>	0-2000 ppm	100 ppm	200 ppm	400 ppm	CHS-7F5Z60-CH <sub>2</sub> Cl <sub>2</sub>
Methylene Chloride	CH <sub>2</sub> Cl <sub>2</sub>	0-1000 ppm	50 ppm	100 ppm	200 ppm	CHS-7-F5Z70-CH <sub>2</sub> Cl <sub>2</sub>
Nitric Oxide	NO	0-100 ppm	0.5ppm	1.0 ppm	2.0 ppm	CDS-07NO50
Nitric Oxide	NO	0-10 ppm	0.5ppm	1.0 ppm	2.0 ppm	CDS-07NO20
Nitrogen Dioxide	NO <sub>2</sub>	0-10 ppm	0.5ppm	1.0 ppm	2.0 ppm	CDS-7BND20
Nitrogen Trifluoride	NF <sub>3</sub>	0-100 ppm	5 ppm	10 ppm	20 ppm	CDS-7-7BNF56-TF
Nitrogen Trifluoride	NF <sub>3</sub>	0-30 ppm	1.5 ppm	3 ppm	6 ppm	CDS-7-7BNFR6-TF
Nitrogen Trifluoride (non-standard range)	NF <sub>3</sub>	0-250 ppm	12 ppm	25 ppm	50 ppm	CDS-7-7BNF69
Octane	C <sub>8</sub> H <sub>18</sub>	0-2000 ppm	100 ppm	200 ppm	400 ppm	CHS-7-F2Z60OC-C <sub>8</sub> H <sub>18</sub>
Octane	C <sub>8</sub> H <sub>18</sub>	0-1000 ppm	50 ppm	100 ppm	200 ppm	CHS-7-F2Z70OC
Oxygen	O <sub>2</sub>	0-25% vol	2 %vol	19 %vol	18 %vol	COS-70XA0



## New Cosmos PS-7 Measurable Gases, cont.

PS-7 GAS SENSOR	FORMULA	RANGE	LDL	ALARM LEVEL 1	ALARM LEVEL2	SENSOR PART NUMBER
Ozone	O3	0-1ppm	0.05 ppm	0.10 ppm	0.20 ppm	CDS-7-7BOZ06
Pentane	C5H12	0-5000 ppm	250 ppm	500 ppm	1000 ppm	CHS-7-F2Z40P
Pentane	C5H12	0-2000 ppm	100 ppm	200 ppm	400 ppm	CHS-7-F2Z60P
Phosphine	PH3	0-1 ppm	0.05 ppm	0.10 ppm	0.20 ppm	CDS-7-7BPH06
Phosphorous Trifluoride	PF3	0-10 ppm	0.5 ppm	1.0 ppm	2.0 ppm	CDS-07PF20
Propane LPG Sensor (will not detect CH4)	C3H8	0-100% LEL	5% LEL	10% LEL	20% LEL	CHS-7-C2A10-LPG
Propylene	C3H6	0-100% LEL	5% LEL	10% LEL	20% LEL	CHS-7-C2Z10-C3H6
Propylene	C3H6	0-2000 ppm	100 ppm	200 ppm	400 ppm	CHS-7-F2Z60-C3H6
Propyl acetate	C5H10O2	0-100% LEL	10% LEL	20% LEL	40% LEL	CHS-C2Z10-PA
Propyl acetate	C5H10O2	0-2000 ppm	200 ppm	500 ppm	1000 ppm	CHS-7-F2Z60-PA
Propylene glycol monomethyl ether (PGME)	C4H10O2	0-5000 ppm	250 ppm	500 ppm	1000 ppm	CHS-7-F2Z40PGME
Propylene glycol monomethyl ether acetate (PGMEA)	C4H14O3	0-5000 ppm	250 ppm	500 ppm	1000 ppm	CHS-7-F2Z40PGMEA
Propylene Oxide	PGMEA	0-2000 ppm	100 ppm	200 ppm	400 ppm	CHS-7-F2Z60PO
Silane	SiH4	0-25 ppm	1.25 ppm	2.5 ppm	5.0 ppm	CDS-7-7BSH36
Silane	SiH4	0-5 ppm	0.25 ppm	0.5 ppm	1.0 ppm	CDS-7-7BSH16
Styrene	C8H8	0-2000 ppm	100 ppm	200 ppm	400 ppm	CHS-7-F2Z60S
Sulfur Dioxide	SO2	0-25 ppm	1.25 ppm	2.5 ppm	5.0 ppm	CDS-7-07SD30
Sulfur Dioxide	SO2	0-10 ppm	0.5 ppm	1.0 ppm	2.0 ppm	CDS-7-07SD26
Toulene	C7H8	0-2000ppm	100ppm	200ppm	400ppm	CHS-7-F2T60-C7H8

DOD Technologies - The Leader in Low-Level Gas Detection – proudly offers the most advanced and reliable industrial gas detection solutions. In addition to our manufactured systems, we proudly offer products from the industry's most respected global gas detection brands including:



## The Leader in Low Level Gas Detection

[ABOUT US](#)

### GAS MONITORING SOLUTIONS BY INDUSTRY

For more information or to shop,  
please visit us at the new [DODtec.com](https://DODtec.com)

## Technical Services & Support

DOD Technologies offers world-class technical product repair and support services – both mail-in and on-site. Our expert staff of gas detection technicians stand ready to service your needs. Services include:

- Routine Maintenance Plans
- Gas Detector Repair / Calibration
- Training Services
- Product Trade-In Discounts
- Product Loaner Program (Short-Term)

For more information, call or visit [DODtec.com/services](https://DODtec.com/services).

